

DOT PEEN MARKING MACHINE

ec1



+ HIGH PERFORMANCE

- Constant quality and precision
- Electromagnetic stylus
- Speed & power
- Optimized software

+ EASY TO USE

- Optional rotating D-axis (for marking circular parts)
- Easy programming
- Wide range of options
- Marking parts up to 62Hrc

+ ROBUST AND RELIABLE

- Graduated column
- Design for industrial environment

+ COST SAVING

- Low investment
- No consumable
- No maintenance

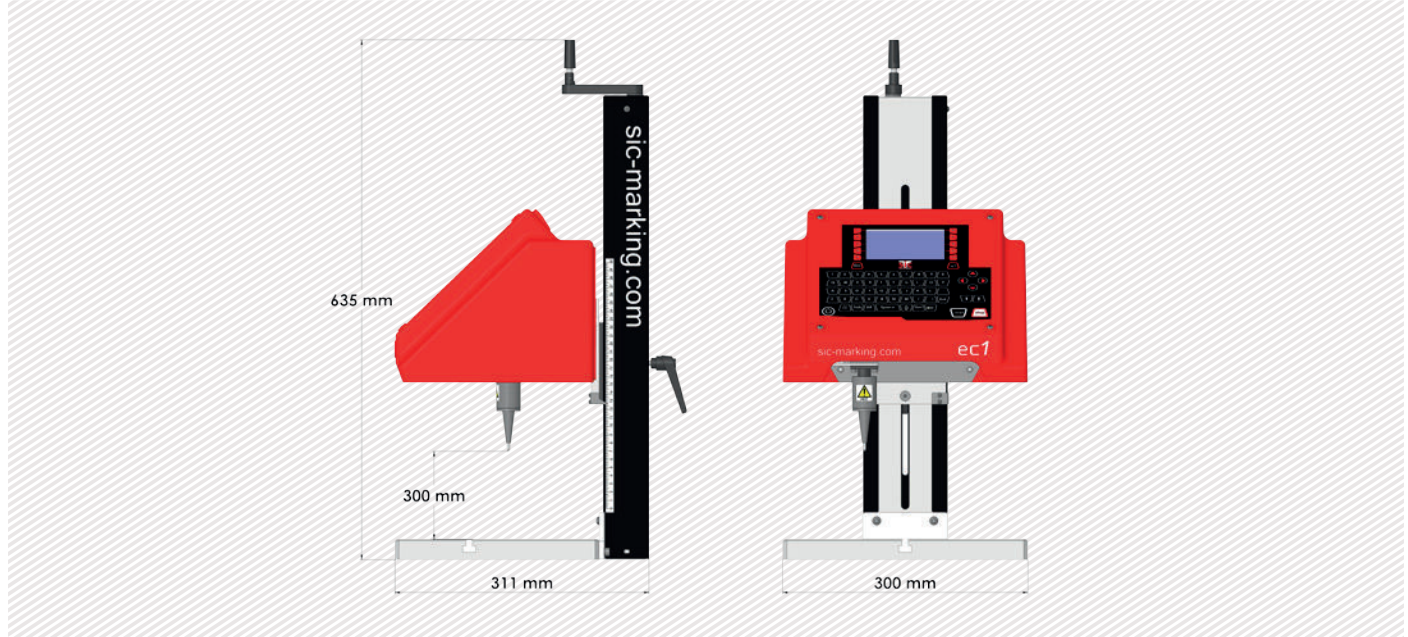


DOT PEEN MARKING EXAMPLES

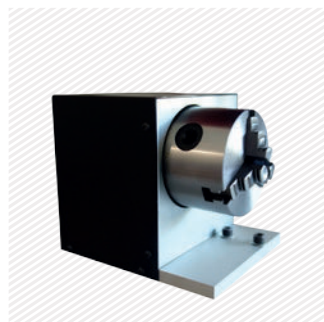


TECHNICAL & MECHANICAL FEATURES

	ec1
Marking window	120 x 100 mm - 4.7 x 3.9 in
External dimensions	311 x 300 x 635 mm - 12.2 x 11.8 x 25 in
Weight	16 kg - 35.2 lbs
Stylus	Tungsten carbide 80 mm - 3.1 in
Passage sous tête	280 mm - 11 in (up to 300 mm - 11.8 in with a 60 mm - 2.4 in stylus)
Rotary D-axis (optional)	For parts up to 150 mm - 5.9 in diameter and 3 kg - 6.6 lbs



OPTIONS



Rotary axes

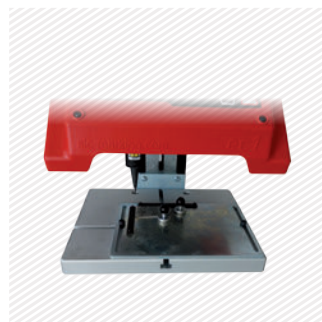


Plate support



Wide range of stylus



Starting cycle pedal



Wireless barcode reader



Datamatrix reader



Maintenance kit

Please consult us if a specific configuration is not published in the table attached.

SIC Marking designs customized and turnkey solutions for all industrial sectors. Our design offices produce machines in compliance with your specifications and your industrial standards.

EC1 CONTROL UNIT

The ec1 controller

- Fully programmable
- Angular and circular marking
- Color screen and usb connection
- Standalone (no PC needed)
- Membrane protected industrial Keyboard
- PC editing software (windows 7 and 10 compatible)



+ Intuitive programming using navigation icons

+ Color screen

+ USB port to easily transfer all marking files

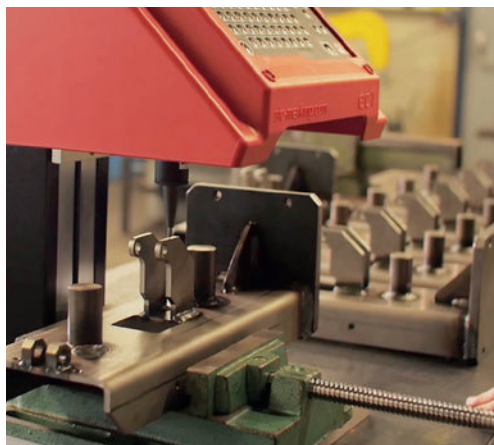
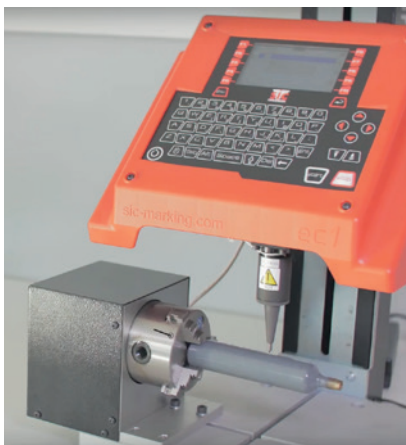


Technical & electronic features



ec1 controller	
LCD screen	HD color, 95 x 54 mm - 3.7 x 2.1 in
Keyboard	68 keys, protected by membrane
Power	100 Watt
Power supply	100-240 VAC, 50-60 Hz
Communication ports	USB
Inputs-outputs	Jack socket
PC software	Creation, backup and transfer of logo files

APPLICATIONS

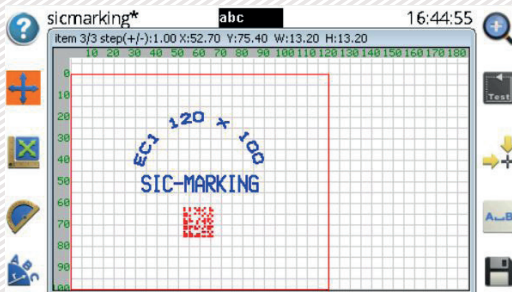


EC1 SOFTWARE

Software features

Memory	>100 Mo
Variable	Alphanumeric, increment, timestamp, barcode
Logos	Download from a PC or USB key
Fonts	Arial, Comic, Comic_B, Courier, OCR, OCR_BOLD, OCRA, 4x6
Style	Linear, Radial, Angular, datamatrix, logo, mirror
Character Size	De 1 mm à 20 mm (limited following marking window)
Impact Force	9 adjustable levels
Depth	Up to 0,3 mm (according to the material)
Resolution Between Dots	0,05 mm MAX
Password	1 security level

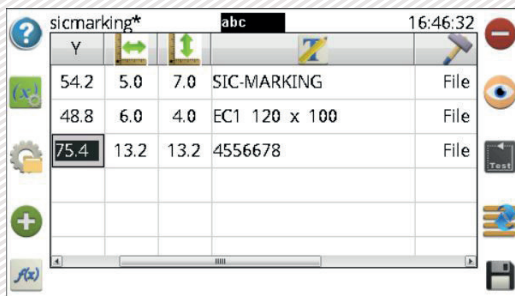
Icon programming Graphic View



+ Ergonomics and speed of programming

+ Advanced programming

Spreadsheet mode programming



+ History function with anti-duplicate

+ Excel export of history

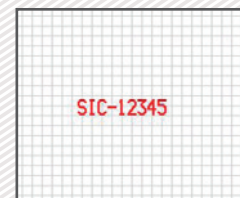
+ Automatic or semi-automatic mode by barcode reading



Angular marking



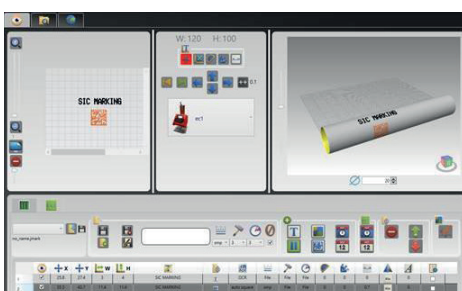
Radiant marking



Text or increment

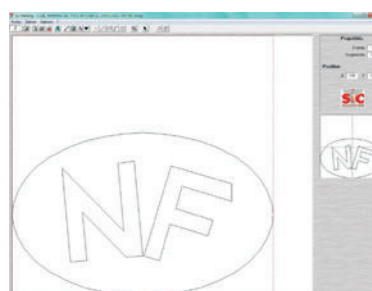
LES UTILITAIRES PC

File editor



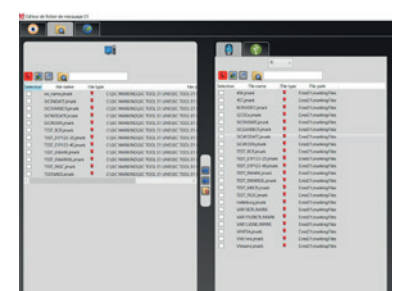
+ Creation or modification of files on PC.

Creation of logos



+ Creation of vector and matrix logos.

File manager



+ Backup and transfer of files (by USB key or by USB link).