

INTEGRATED SCRIBING MACHINE

e10R i124s

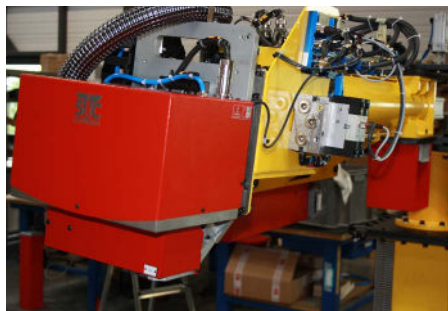


- + Double-acting stylus assembly
- + Stylus upper/lower position control sensor
- + Advanced position control and error detection
- + Ideal marking accuracy for VIN (Vehicle Number Identification)



- + **HIGH PERFORMANCE**
 - Light marking with piston $\varnothing 30$
 - Deep marking with piston $\varnothing 50$
- + **EXTREMELY QUIET MARKING**
 - Air supply
 - Specific mechanics to reduce noise
- + **SIMPLE AND EASY TO USE**
 - Ideal for integrations
 - Robotic cable removable
 - Quick pneumatic connection
- + **ROBUST AND RELIABLE**
 - New design for better performance and low maintenance
 - Protected by metal bellows
 - Designed for intense use in industrial environments

APPLICATIONS

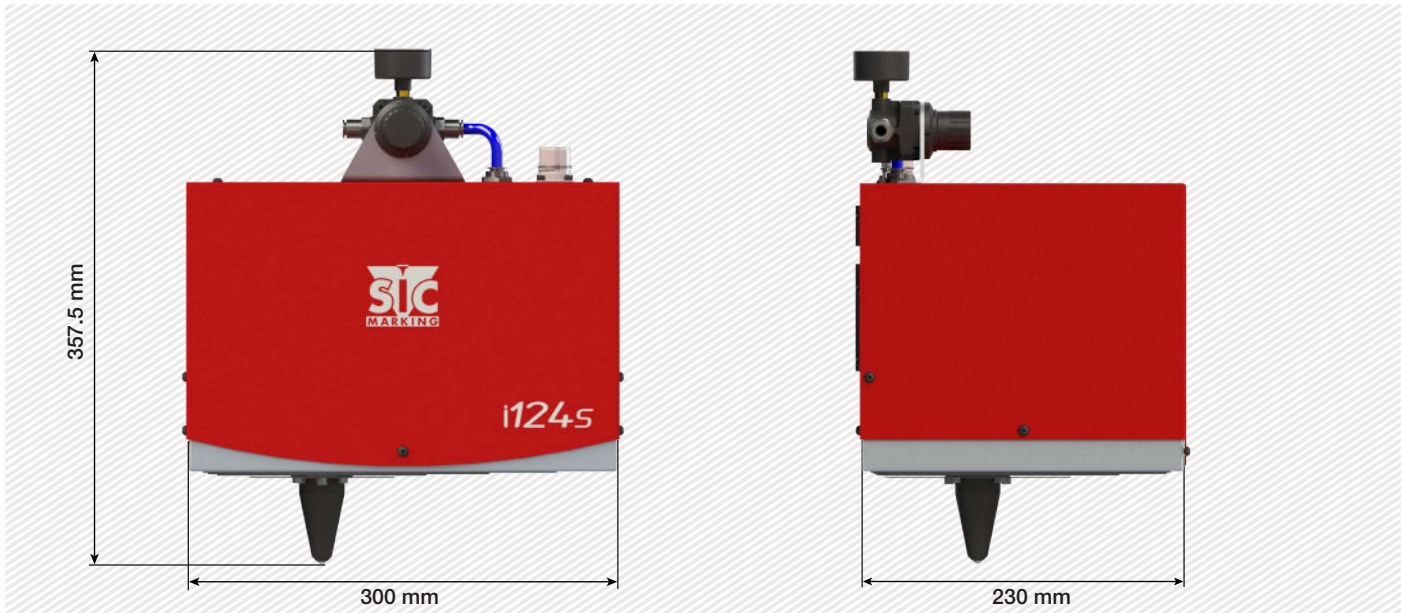


SCRIBING MARKING EXAMPLES

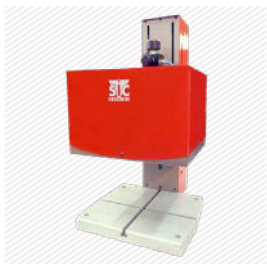


TECHNICAL & MECHANICAL FEATURES

e10 i124s (Ø30 - Ø50)	
Marking window	120 x 60 mm - 4.7 x 2.4 in
External dimensions	230 x 300 x 357.5 mm - 9 x 11.8 x 14.1 in
Weight	18 kg - 40 lbs
Stylus	Carbide or Diamond Tip
Machine / controller cable length	5 m - 16.4 ft (10 m - 32.8 ft and 15 m - 49.2 ft optional)
Air supply	6 bars



OPTIONS



Reinforced column



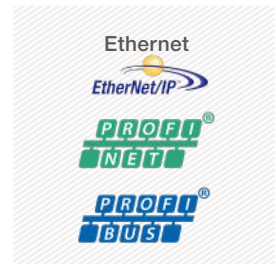
DIN rail kit for e10R controller



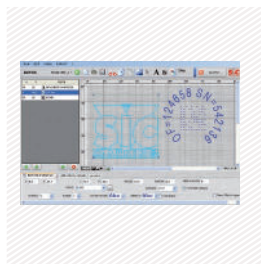
Wide range of stylus



Wireless barcode reader



Full protocols communication cards for e10 Controller



PC WINSIC 2 software



Maintenance kit

Please consult us if a specific configuration is not published in the attached table. SIC Marking designs customized and turnkey solutions for all industrial sectors. Our design offices produce machines in compliance with your specifications and your industrial standards.




E10 CONTROL UNIT

The e10 controller

- USB Port on front panel (easy accessibility): to easily upload / download your marking files
- Fully programmable
- Standalone (no PC needed)
- Membrane protected industrial Keyboard
- IP40 waterproof box (no opening or fan)
- Communication Cards - I / O

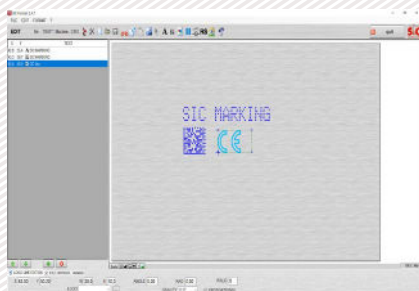


Technical & electronic features

e10 Controller		Communication	
Dimensions	322 x 380 x 112 mm - 13.7 x 15 x 4.4 in 140 x 380 x 222 mm - 5.5 x 15 x 8.7 in with DIN rail kit option	Communication ports	RS232, RS422, USB, RS485 Profibus, TCP/IP, Ethernet/IP
Weight	5 kg - 11lbs	Inputs-outputs	8/8
LCD screen resolution	480 x 272 pixels	External keyboard input	USB
Keyboard	Qwerty integrated, protected by membrane	PC software	Creation of marking files, transfer controller / PC or USB key
Power	300 Watt	Optional communication cards:	
Power supply	Single phase, 85 to 260 VAC, 50 to 60 Hz	Ethernet TCP	
Controlled axes	2 (optional 3rd / 4th axis card)		 
Operating temperature	From 5 to 40°C		

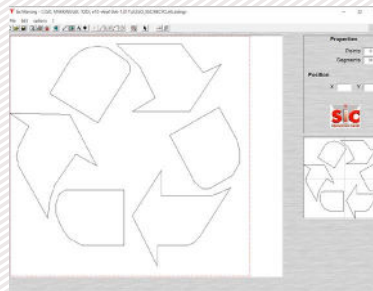
PC UTILITIES

File editor



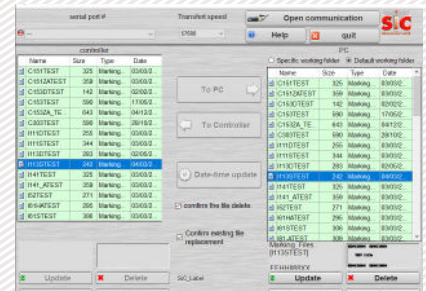
- + Creation or modification of files on PC.

Creation of logos



- + Creation of vector and matrix logos.

File manager




- + Backup and file transfer utility.


E 10 RANGE SOFTWARE

Software features

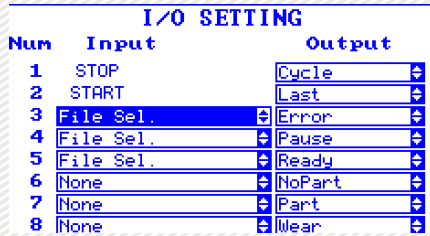
Text function	Incrementation, date codes
Logos	Download from a PC or USB key
Datamatrix	Up to 348 characters, 48 x 48 dots
Fonts	Arial, Comic, Comic_B, Courier, OCR, OCR_BOLD, OCRA, 4x6
Style	Angular, Radial, Inverse, and Mirror
Character Size	From 0,1 mm to 99 mm (limited following marking window)
Depth	Up to 0,3 mm (according to the material)
Password	2 security levels
History function	Exportable Excel file
Help with maintenance	Auto diagnosis
Available languages	17



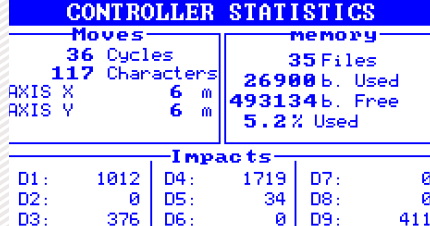
Vue graphique



Menu édition



Num	Input	Output
1	STOP	Cycle
2	START	Last
3	File Sel.	Error
4	File Sel.	Pause
5	File Sel.	Ready
6	None	NoPart
7	None	Part
8	None	Wear



CONTROLLER STATISTICS

Moves		memory	
36 Cycles		35 Files	
117 Characters		26900 b. Used	
AXIS X 6 m		493134 b. Free	
AXIS Y 6 m		5.2 % Used	

Impacts		
D1: 1012	D4: 1719	D7: 0
D2: 0	D5: 34	D8: 0
D3: 376	D6: 0	D9: 411

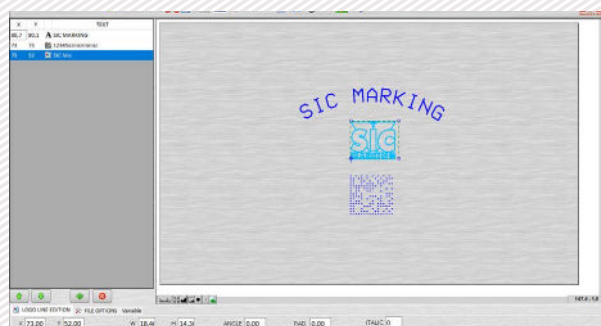
PC software for directly controlling the marking machine.

Available functions:

- Editing of marking files
- Input / output management
- History function and anti duplicates
- Datamatrix ECC200 and UID
- ...

OPTIONAL WINSIC SOFTWARE

WINSIC is a PC software for direct control of the marking machine.



+ Built-in logo design utility

+ Database Management (Excel, Access, txt)



+ Insertion of background images

